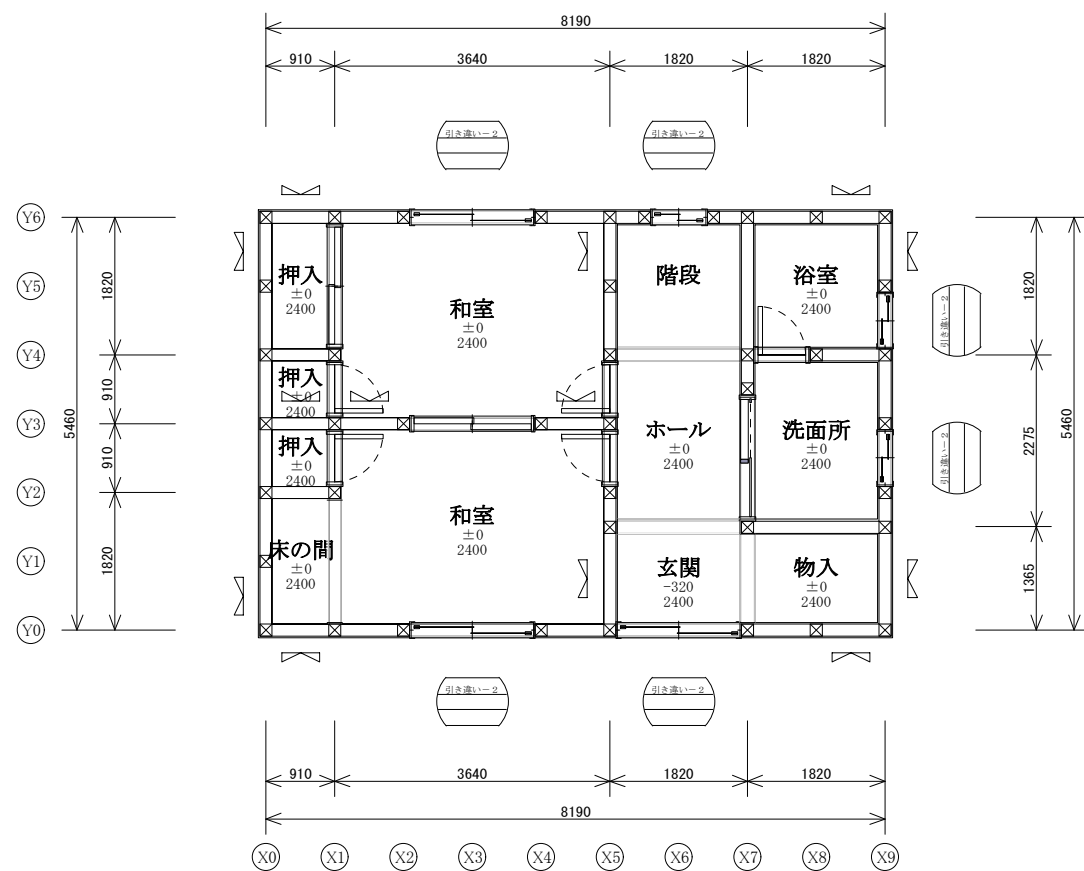
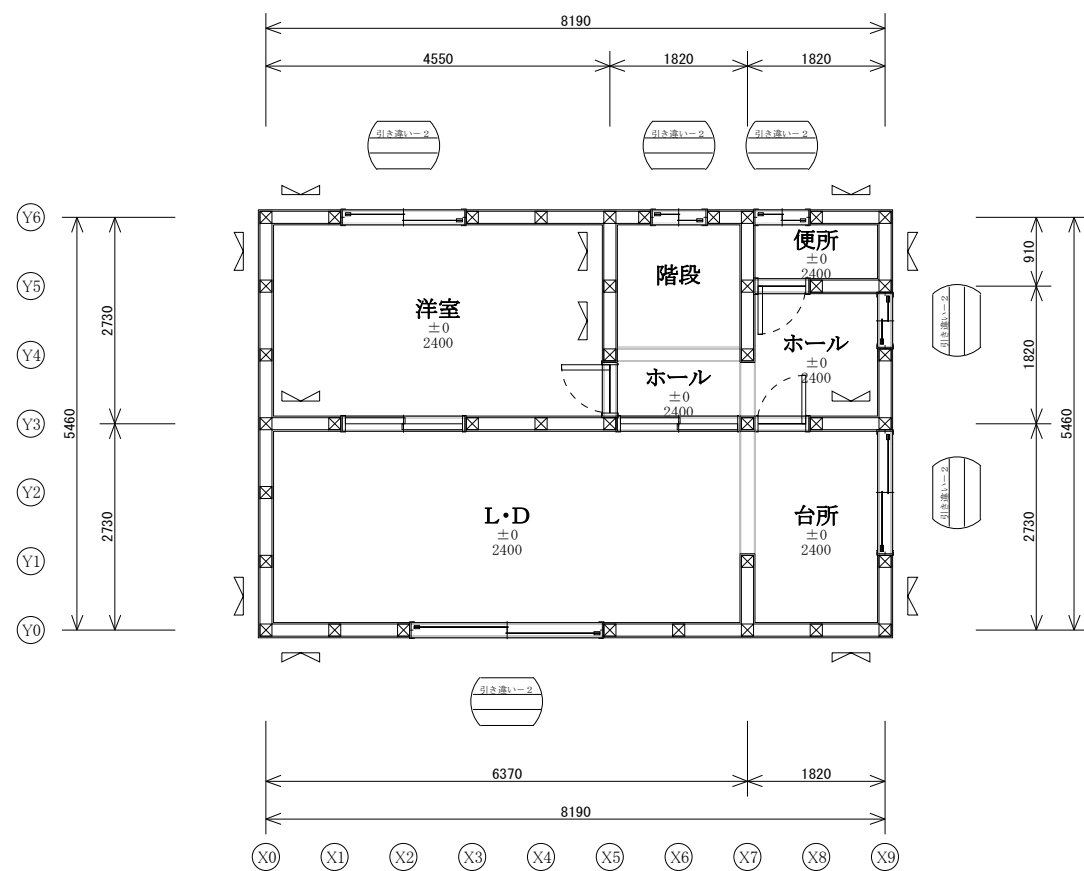


筋かい
たすき掛筋かい(45×90)
サッシ
サッシ形状 サッシ番号

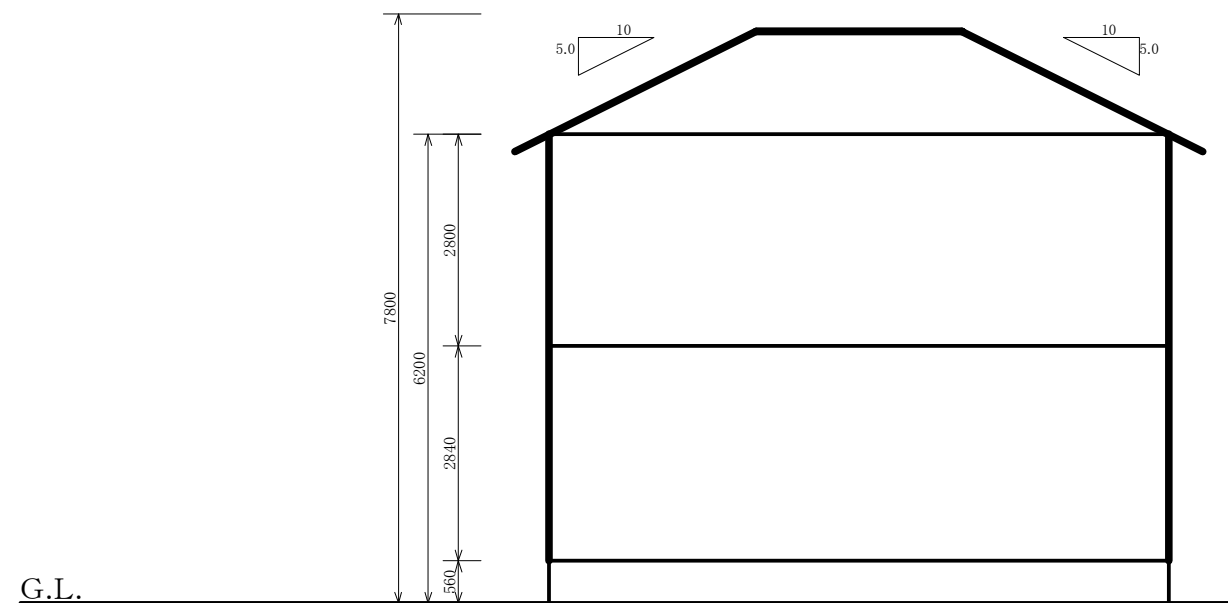


● 1階平面図 S = 1/100

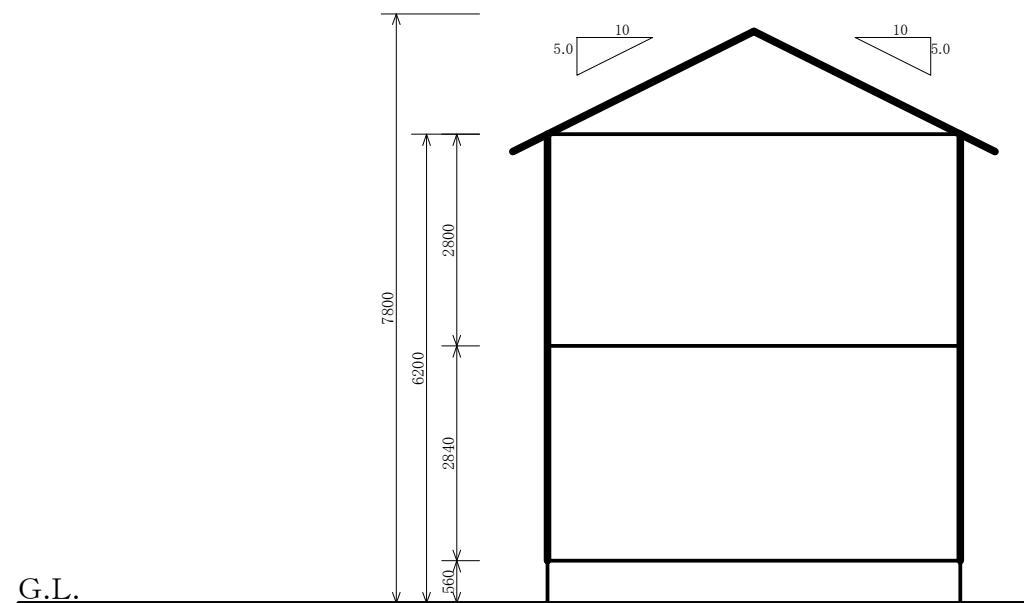
筋かい
たすき掛筋かい(45×90)
サッシ
引違い 18518 サッシ形状 サッシ番号



● 2階平面図 S = 1 / 100



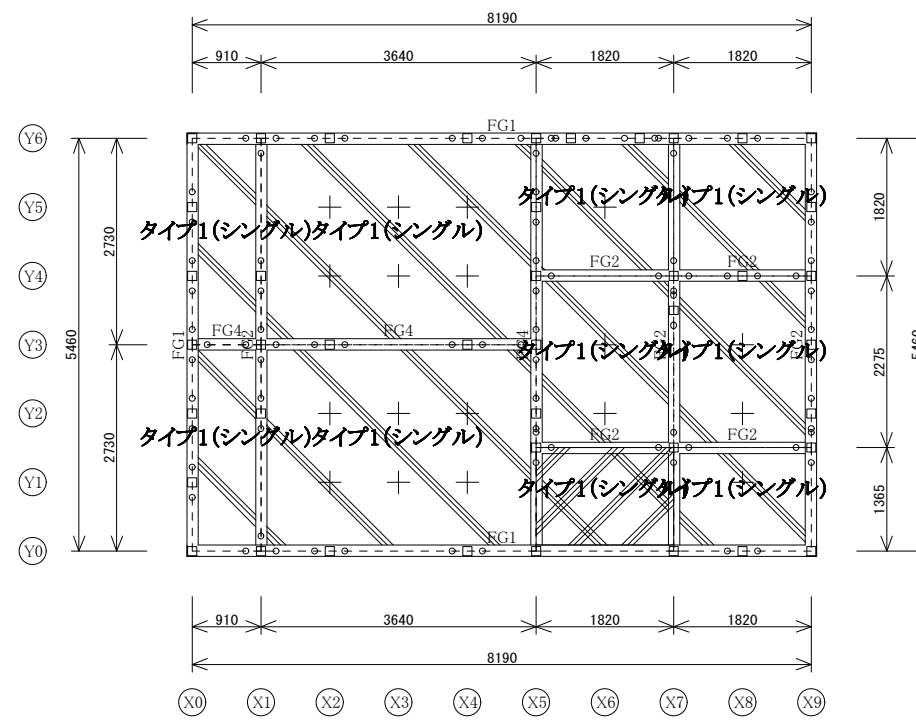
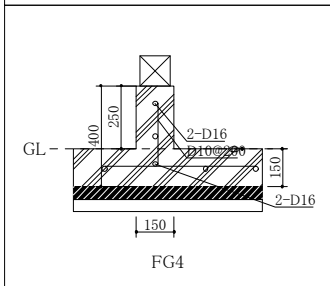
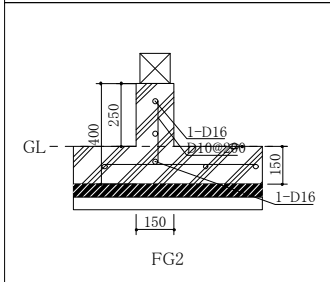
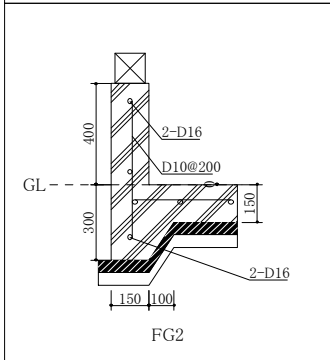
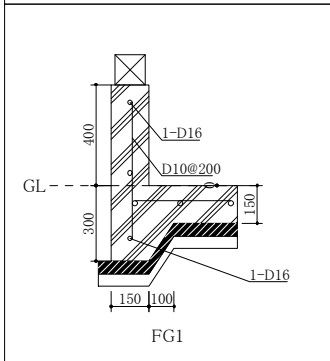
断面図(南)

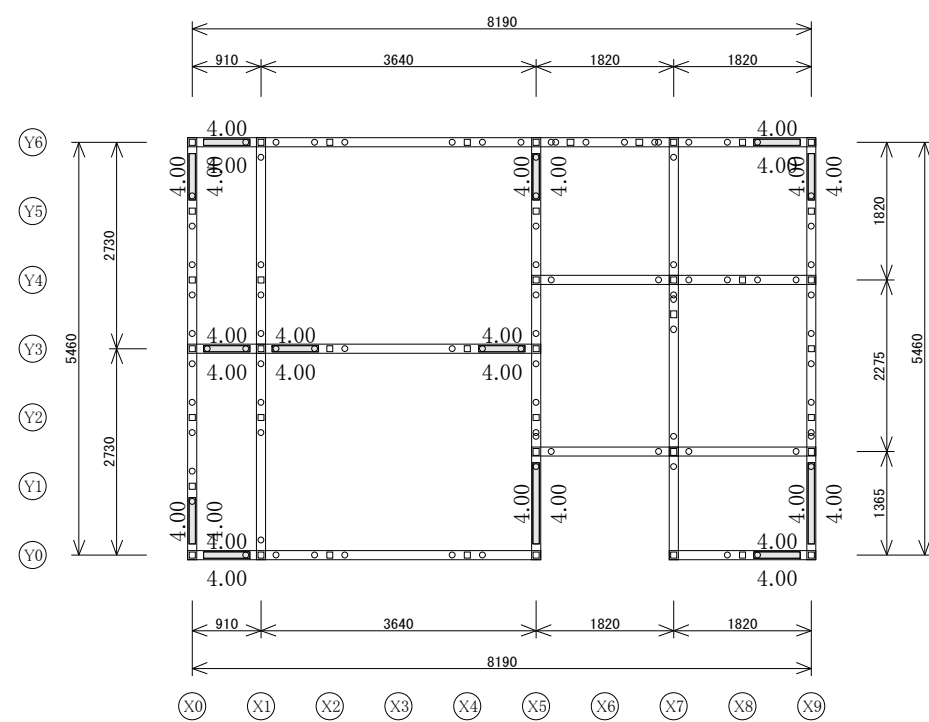


断面図(東)




凡例	
+	床束
	ベタ基礎
	土間コンクリート
○	アンカーボルト:M12(ヒバ等)
□	柱

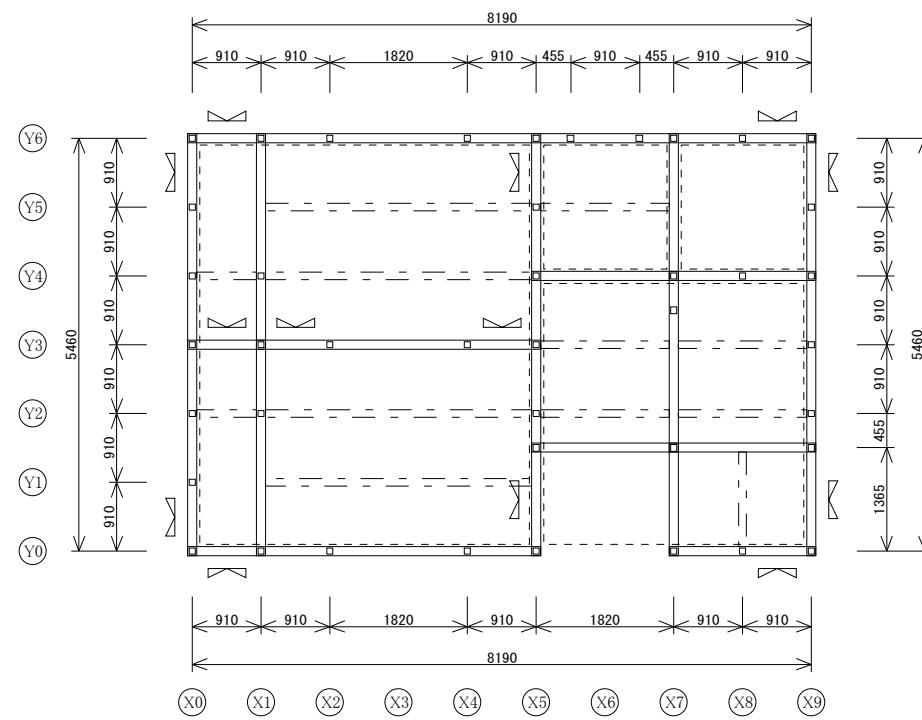
基礎断面図






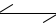


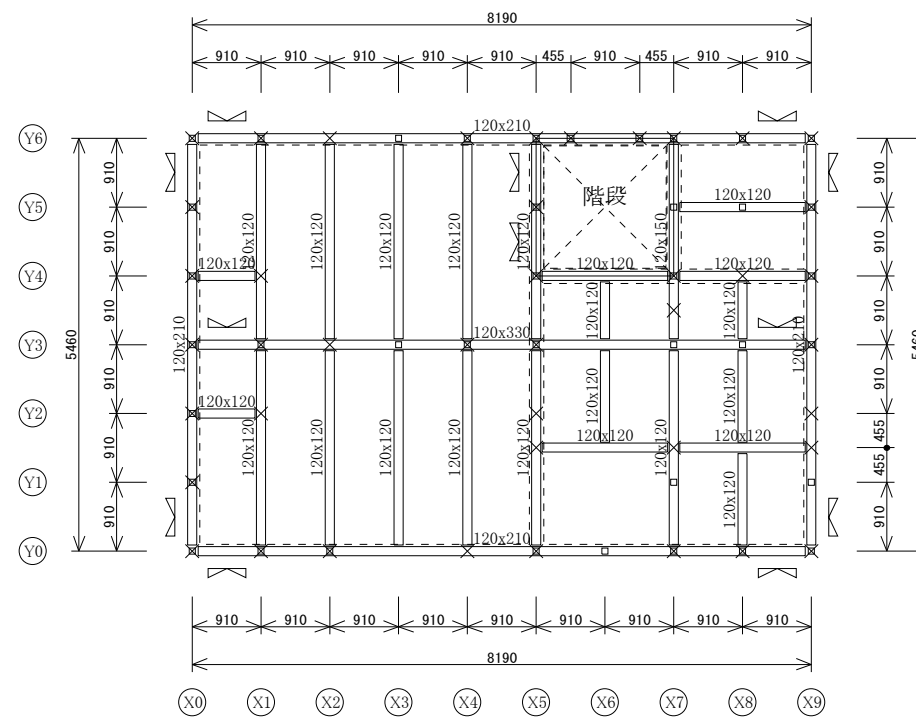
●アンカーボルト伏図 S=1/100

凡例	
筋かい	
 たすき掛筋かい(45×90)	
柱	
 当階	
床等	
 根太方向	



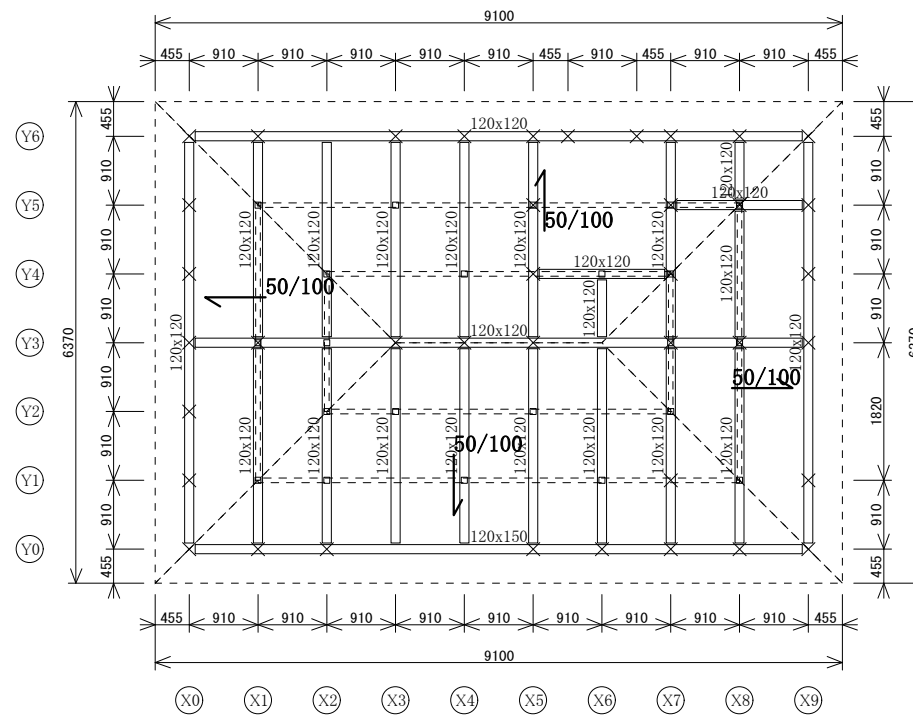
●1階床伏図 S=1/100

凡例	
筋かい	
	たすき掛筋かい(45×90)
柱	
	当階
	下階
床等	
	根太方向

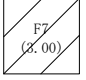


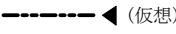


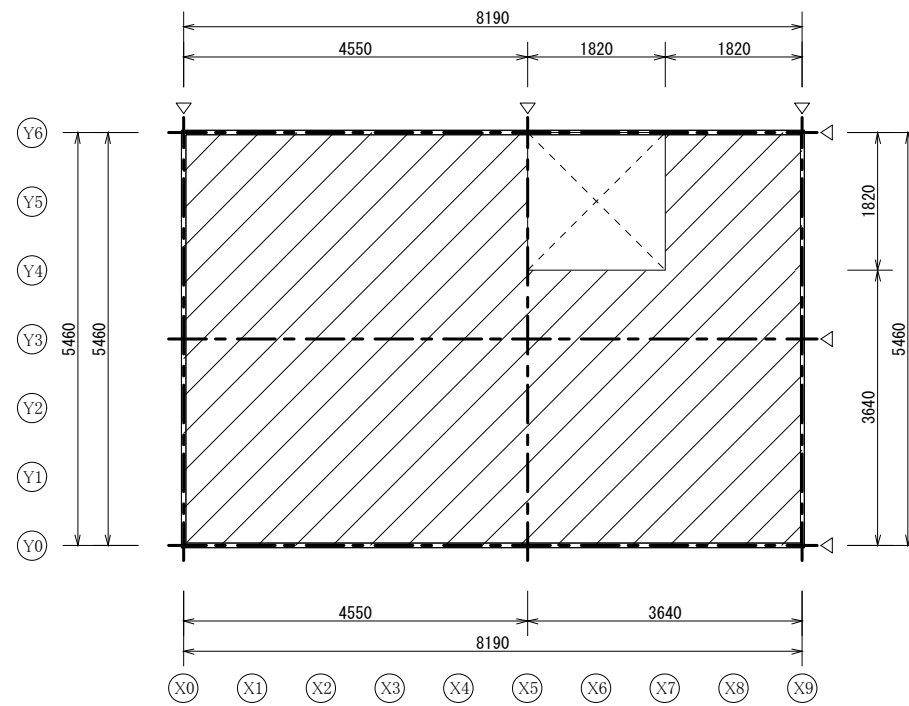
●2階床伏図 S=1/100

凡例	
	柱
×	下階
	小屋
□	小屋束

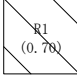
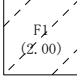

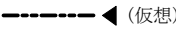


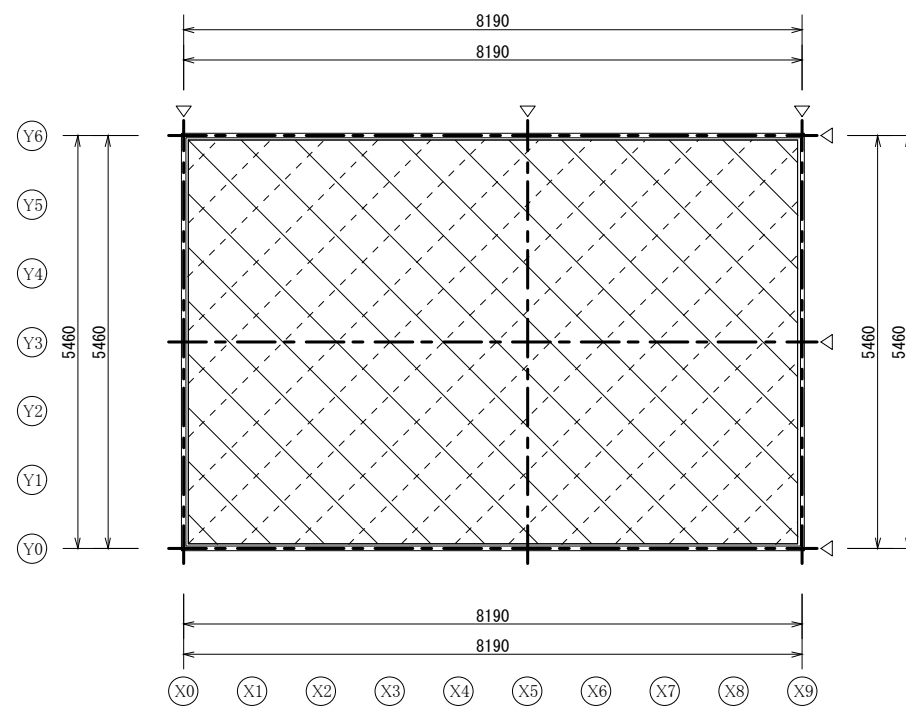
●小屋伏図 S=1/100

凡例	
<床水平構面>	
	構造用合板(根太) (3.00倍)24寸 N75@150以下
	吹抜
<耐力壁線>	
	
	(仮想)



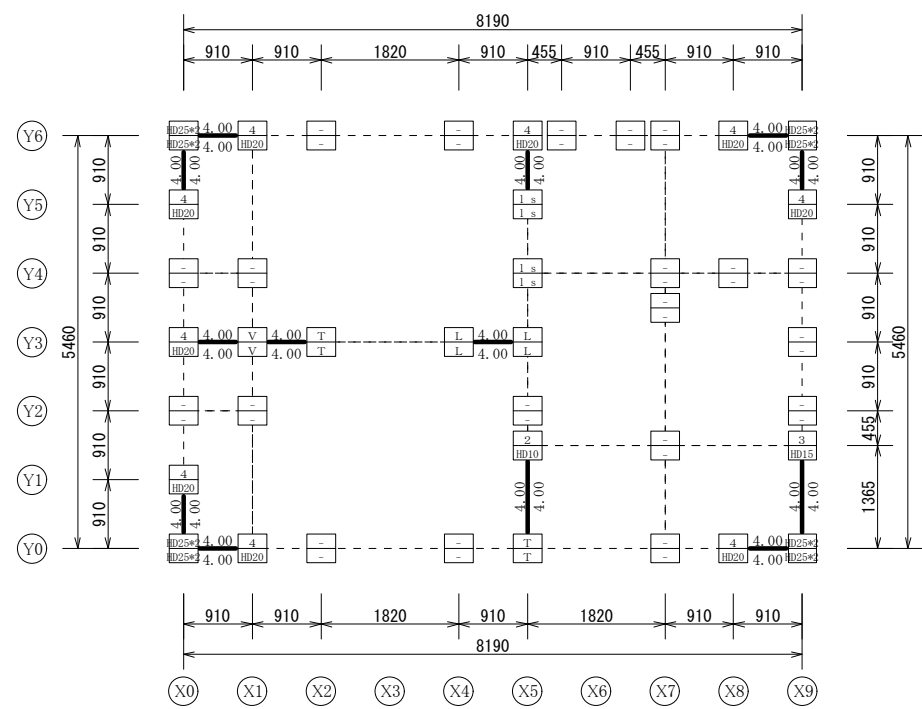
●2階床水平構面伏図 S=1/100

凡例	
<屋根水平構面>	
	構造用合板(3寸勾配以下)9# 垂木@500 転ばし N50@150以下
<小屋水平構面>	
	構造用合板(2.00倍)根太@340落し込み N50@150以下
<耐力壁線>	
	
	(仮想)



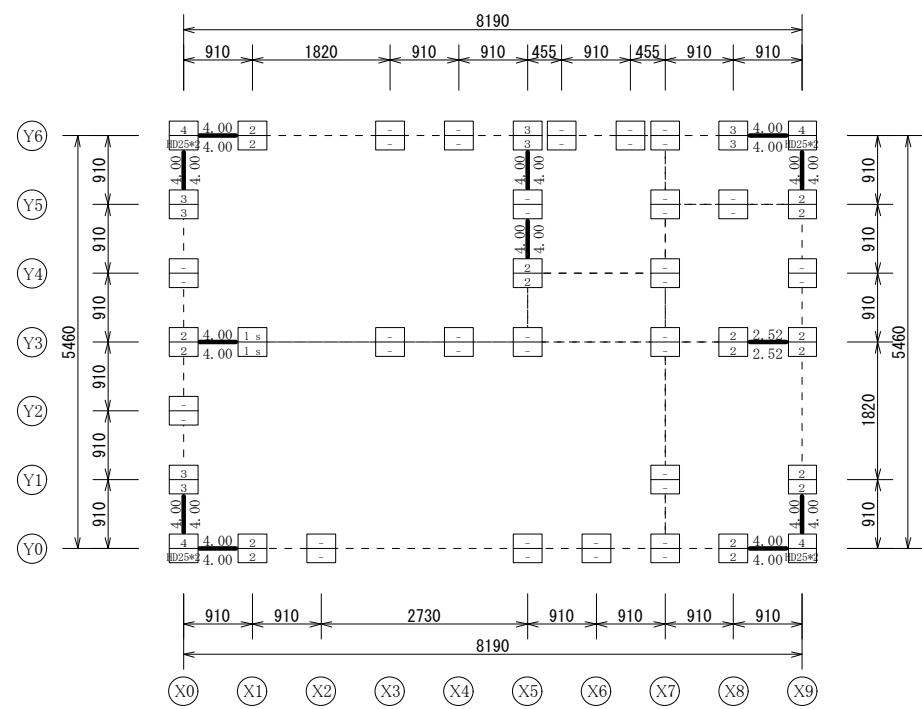
●小屋水平構面伏図 S=1/100

凡例	
<耐力壁>	
$\frac{X+方向壁倍率}{X-方向壁倍率}$	
$\frac{Y+方向壁倍率}{Y-方向壁倍率}$	
<金物>	
柱頭金物	
柱脚金物	
L L字型かど金物	
T T字型かど金物	
V 山形プレート	
1 s 短冊金物+スクリュー釘	
2 10kN引寄金物	
HD10 10kNホルダ`ン金物	
3 15kN引寄金物	
HD15 15kNホルダ`ン金物	
4 20kN引寄金物	
HD20 20kNホルダ`ン金物	
HD25*2	

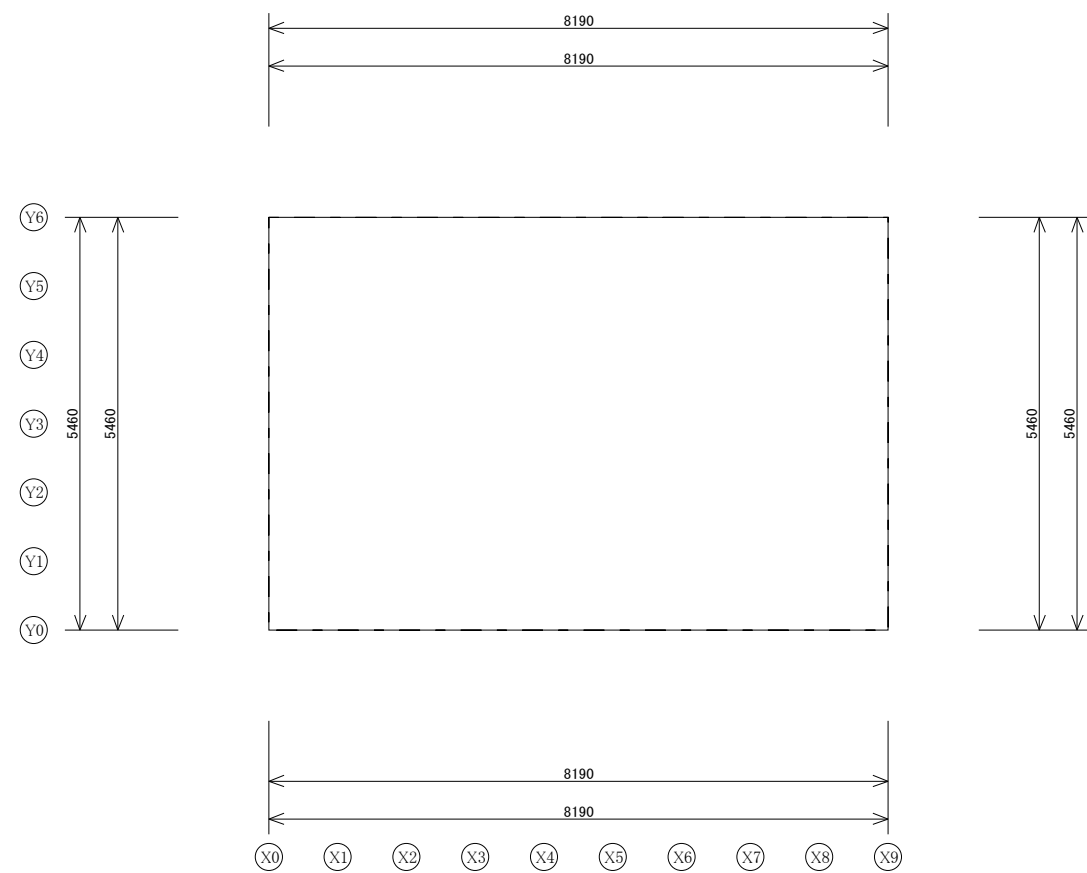


●1階柱頭柱脚金物配置図 S=1/100

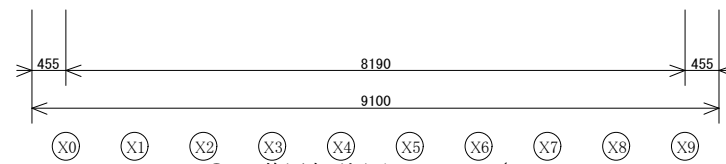
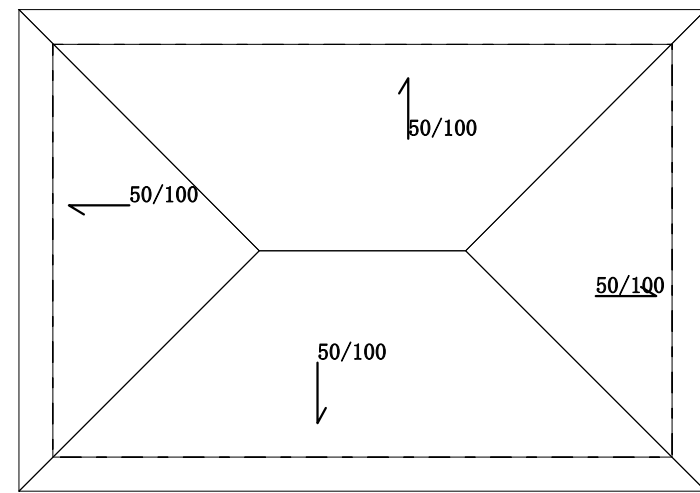
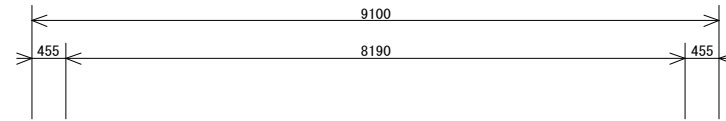
凡例	
<耐力壁>	
$\frac{X+方向壁倍率}{X-方向壁倍率}$	
$\frac{Y+方向壁倍率}{Y-方向壁倍率}$	
<金物>	
柱頭金物	
柱脚金物	
L	L字型かど金物
T	T字型かど金物
V	山形プレート
1s	短冊金物+スクリュー釘
2	10kN引寄金物
HD10	10kNホルダ`ン金物
3	15kN引寄金物
HD15	15kNホルダ`ン金物
4	20kN引寄金物
HD20	20kNホルダ`ン金物
HD25*2	



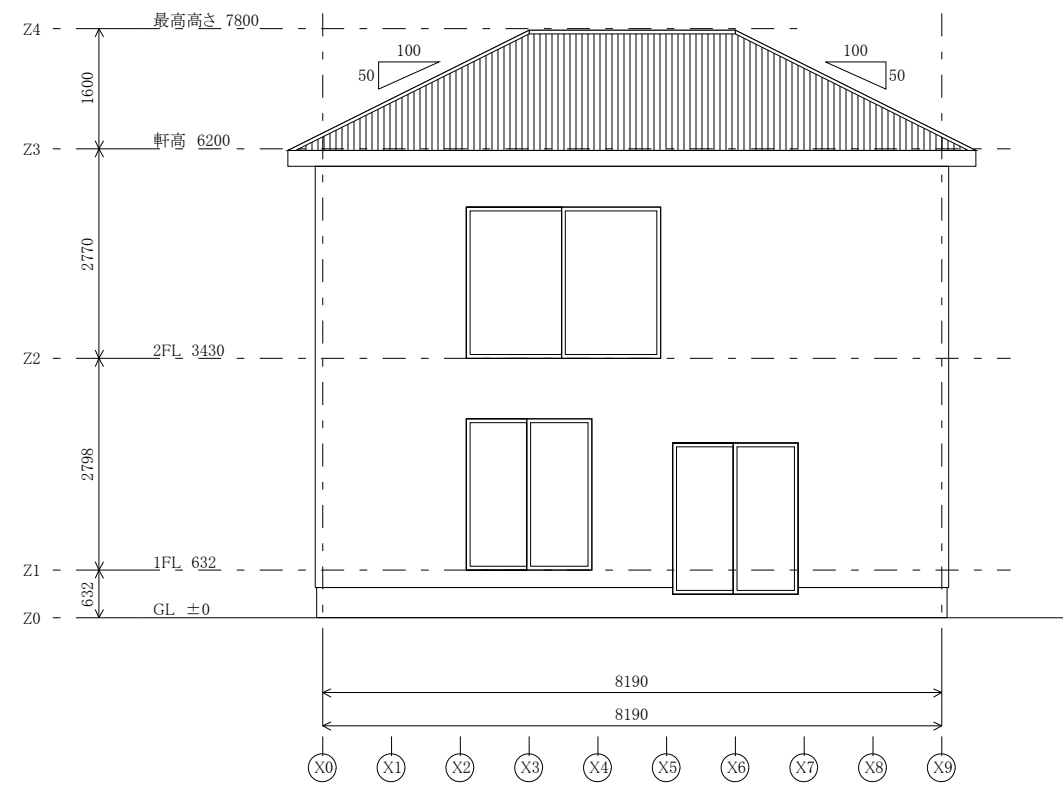
●2階柱頭柱脚金物配置図 S=1/100



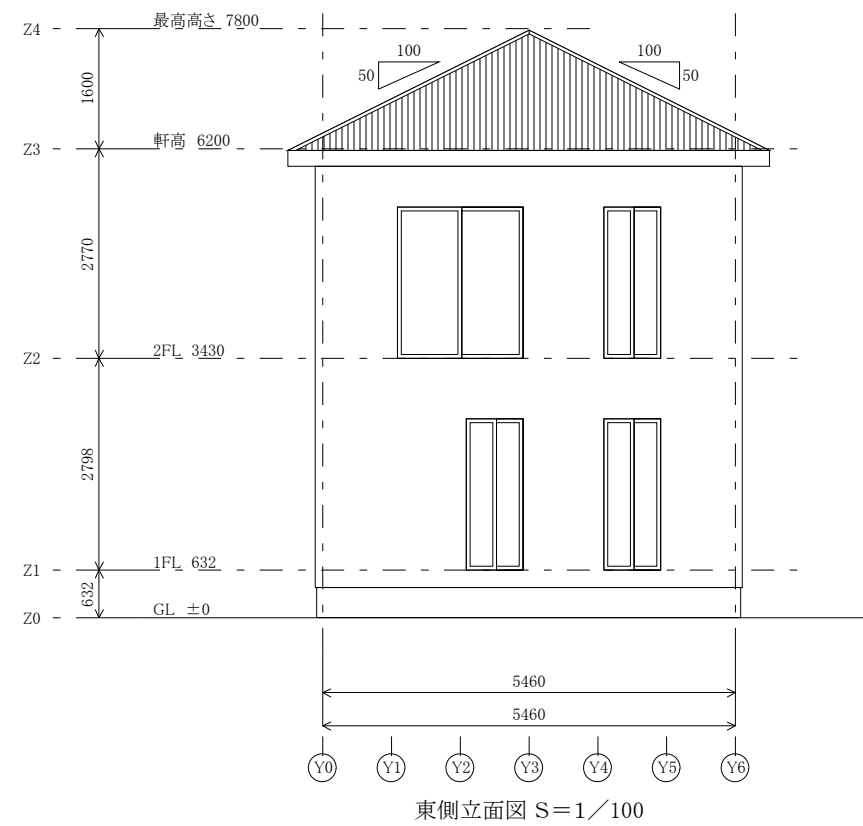
● 1階屋根伏図 S = 1 / 100

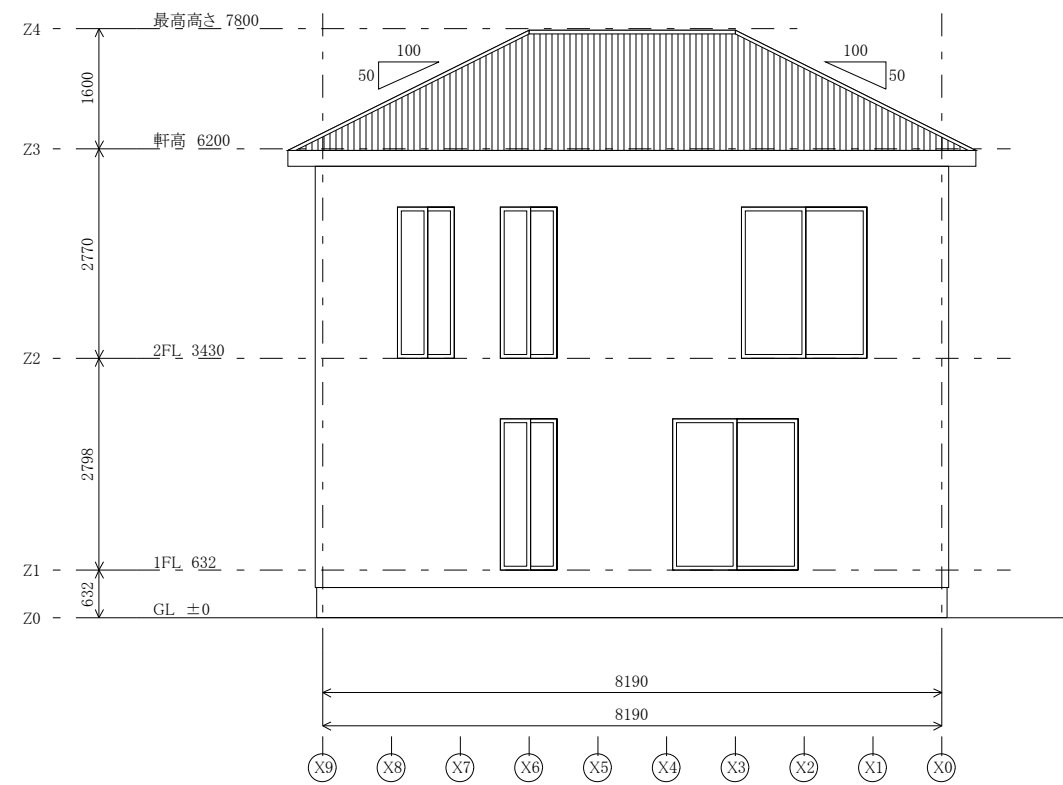


● 2階屋根伏図 S = 1 / 100



南侧立面图 S=1/100





北側立面図 S=1/100

